

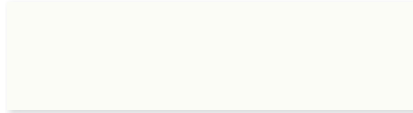
RELIABLE

RELIABLE finishes enhance product appearance to blend with other colors selected.

These same finishes provide extended weathering resistance similar to adjacent building surfaces. RELIABLE provides most finishes available to architects and engineers. The standard finishes described herein represent those finishes usually selected, specified, or required for most applications.

Finishes and Color Guide

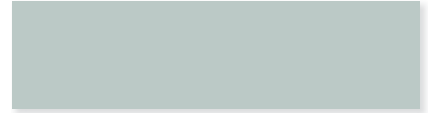
Standard Colors



* BONE WHITE (24)



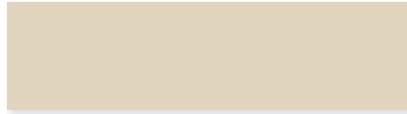
* DARK BRONZE (75)



* PORTLAND STONE (49)



* LIGHT STONE (43)



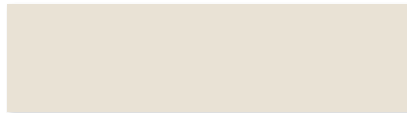
* SHELburnE (69)



* FOREST GREEN (36)



* SANDSTONE (67)



* HERRINGBONE (37)



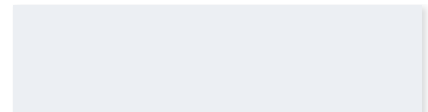
* CORONADO RED (34)



* SAHARA TAN (65)



* STONE GRAY (78)



* ASCOT WHITE (19)



* BLACK (89)



* MEDIUM BRONZE (72)

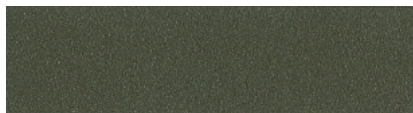


* TAUPE (52)

Pearledize 70 and Pearledize 50 Standard Colors

9 additional colors are only available in Pearledize 70 and Pearledize 50. Clear Anodize and 3 Color Anodize colors are also available.

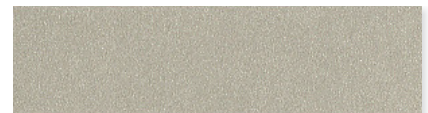
Italicized color names and codes are available in Anodized Finish.



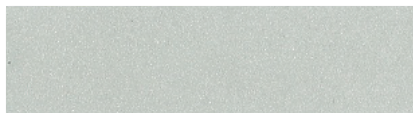
* DARK BRONZE (75)
* *DARK BRONZE (75)*



* MEDIUM BRONZE (72)
* *MEDIUM BRONZE (72)*



* CHAMPAGNE BRZ (71)
* *CHAMPAGNE BRZ (71)*



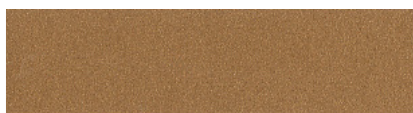
* BRIGHT SILVER (88)
* *Clear 204R1 & 215R1 (00)*



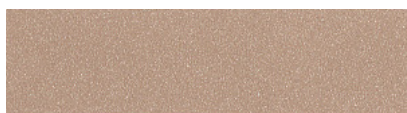
* WARM SILVER (96)



* ASTI (86)



* COPPER (92)



* CORAL REEF (93)



* BLUE (05)

* Denotes RELIABLE Color Code - Please use when ordering.

This color card is for reference only and is not meant to be used for color matching or final color approval. Shades may vary due to the color and resolution of monitors or print-outs. RELIABLE is not responsible for color matches made with this online color chart.

Phone: 1-800-624-3914 • e-mail: sales@reliablelouvers.com • www.reliablelouvers.com • 1300 Enterprise Rd., P.O. Box 580, Geneva, Alabama 36340.



Finishes and Color Guide

Factory finishes by RELIABLE are designed for low VOC emissions and eliminate the risk of VOC emissions found in louver finishes that are applied on site. All RELIABLE manufacturing facilities operate in full compliance with all applicable air permitting regulations. All facilities maintain ISO 14001 Environmental Management Systems which include VOC emission reduction strategies including state of the art spray equipment and operator training.

Type of Finish

2 COAT - 70% PVDF

RELIABLE Superior Finish: 2 Coat 70% PVDF wet on wet paint finishes provide maximum resistance against color fade and chalking. This carbon/fluorine bond, unique to the resin, when coupled with the finest inorganic pigments, produces the most durable and long lasting finish in the industry. These finishes are resistant to most chemicals, acid rain, salt spray and general air pollution. RELIABLE offers a twenty- year warranty on these finishes in standard colors on standard extruded aluminum products. All standard colors meet or exceed AAMA 2605.

2 COAT BAKED ENAMEL SILICONE MODIFIED POLYESTER

RELIABLE High Performance Finish: 2 coat, wet on wet, baked enamel finish with a highly durable silicone-modified polyester resin that provides fluoropolymer benefits such as long color life and resistance to chalking and chemicals. Its proprietary resin formulation gives it vastly superior hardness which is a major benefit during installation and aggregative environments. Ten-year warranty for standard colors are available. Before paint application, the louvers shall be thoroughly cleaned and pretreated to assure maximum performance.

PRIME COAT

Preparation for field painting: Finish may be top coated with epoxy, vinyl, urethane and other heavy-duty coatings within six months of applications. Prime coat contaminations always occur before field painting and requires thorough field cleaning prior to painting.

PEARLEDIZE 70 AND PEARLEDIZE 50

RELIABLE'S High Pearlescent Finish: Pearledize is a PVDF-based finish that utilizes pearlescent mica flakes to simulate the metallic appearance of anodized and metallic paint finishes.

Pearledize 50 (50% PVDF): Meets the AAMA 2604 specification. A ten-year warranty is available on standard colors on standard extruded aluminum products.

Pearledize 70 (70% PVDF): Pearledize 70 meets the AAMA 2605 specification. A twenty-year warranty is available on standard colors on extruded aluminum products.

COLOR ANODIZE

Electrolytically deposited coating on aluminum: The color anodize process specified in Aluminum Association Code AA-C22A44 electrolytically deposits inorganic color pigment finish to a 0.7 mil (18µm) minimum surface depth on sulfuric acid anodized aluminum. Treated aluminum is sealed to convert a freshly formed aluminum oxide finish to a corrosion resistant, inert condition. Available only on aluminum. Some shade variation may occur.

CLEAR ANODIZE

Clear oxide coating for aluminum: Clear anodize preoxidizes the aluminum surface for uniform clear finish not easily affected by natural oxidizing influences. Improved metallic luster appearance is similar to mill finish. 204-R1 (Aluminum Association Code AA-C22A31) provides 0.4 mi (10µm) minimum surface depth treatment recommended for normal weather exposure. 215-R1 (Aluminum Association Code AA-C22A41) provides 0.7 mils (18µm) minimum surface depth recommended for severely corrosive and abrasive atmospheric exposure. Both finish types available only on aluminum.

For additional information regarding finish warranties, please reference the Reliable Finishes Warranty document on www.reliable.com

Dimensions in parentheses () indicate microns.

*AAMA 2605 is the most stringent performance specification for organic coatings or exterior aluminum finishes in the industry, requiring 10 years south Florida exposure.

Finish Specifications

Before paint application, louvers shall be thoroughly cleaned and pretreated to assure maximum performance. PVDF finish shall be applied to provide 1.2 mils (30µm) factory applied, baked-on film in accordance with AAMA 2605 "Voluntary Specification Performance Requirements and Test Procedures for Superior Performing Organic Coatings on Architectural Extrusions and Panels". Color shall be RELIABLE (specify color name and number). This finish is for both aluminum and steel products, see Finish Warranty guide for details.

The finish shall be applied at 1.2 mils (30µm) total dry film thickness in accordance with AAMA 2604 Color shall be RELIABLE (specify color name and number). This finish is for aluminum only products, see Finish Warranty guide for details.

Louvers shall receive prime coating following thorough cleaning and pretreatment of metal. Field topcoat with epoxy, vinyl, urethane or other heavy-duty coating within six months of application. Prime coat shall be a minimum of .3 ± .1 mils (8 ± 3µm) thick. This finish is for both aluminum and steel products, see Finish Warranty guide for details.

Louvers shall receive thorough cleaning and pretreatment as described above. Pearledize coating shall be applied and baked to achieve a hard durable finish in compliance with either AAMA 2605 or AAMA 2604 as selected and specified. Color shall be RELIABLE (specify color name and number). This finish is for both aluminum and steel products, see Finish Warranty guide for details.

Louvers shall receive electrolytically deposited color anodized finish complying with Aluminum Association Code AA-C22A44. Finish is applied to 0.7 mils (18µm) minimum thickness onto chemically etched and pretreated aluminum. Color shall be RELIABLE (specify color name). This finish is for aluminum only products, see Finish Warranty guide for details.

Louvers shall receive a 204-R1 clear anodize finish complying with Aluminum Association Code-C22A31. Finish is applied to chemically etched and pretreated aluminum to 0.4 mils (10µm) minimum surface depth by a 30 minute anodizing process. Louvers shall receive a 215-R1 clear anodize finish complying with Aluminum Association Code AA-C22A41. Finish is applied to chemically etched and pretreated aluminum to 0.7 mils (18µm) minimum surface depth by a 60 minute anodizing process. This finish is for aluminum only products, see Finish Warranty guide for details.

† AAMA 2604 and requires 5 years of south Florida exposure.

Twenty-year warranties are only available on extruded aluminum products, and are subject to restrictions. Consult RELIABLE for additional information.

Finishes meet latest revision of AAMA Standard.

Size and other limitations on finish types may not apply, consult Reliable for additional information.